

DISASTER NEWS YOU CAN USE

WWW.I-S-CONSULTING.COM/



January 2026



This Month in Disaster History

How a Blizzard Exposed the Love Canal Disaster

The Love Canal environmental disaster stands as one of the most infamous cases of industrial negligence in American history. Originating in the 1890s, entrepreneur William T. Love envisioned a model industrial city in Niagara Falls, New York, powered by a canal connecting the upper and lower Niagara River. Financial setbacks from an economic depression halted the project, leaving a partially dug canal that was later repurposed. In the 1940s, Hooker Chemical Company, with government approval during World War II, began using the site as a dumpsite for over 21,000 tons of hazardous waste, including benzene, dioxins, and halogenated organics. By 1953, Hooker covered the site with soil and sold it to the Niagara Falls Board of Education for \$1, including a liability disclaimer. Unaware of the risks, the board built the 99th Street School and surrounding homes, creating a working-class neighborhood. By the 1970s, residents reported strange odors, black sludge seeping into basements, and chemical burns on children playing outside, signaling the slow emergence of contamination.

The crisis escalated dramatically following the Blizzard of 1977, which dumped 33-45 inches of snow across the region, causing a significant rise in the local water table. This heavy snowfall, combined with prolonged rains, overwhelmed the site's inadequate containment, pushing groundwater upward and accelerating the leaching of toxins...

Continued on Page 2

Whats Inside:

Month in Disaster History.....	Pg. 1
Systems Approach to EM.....	Pg. 1
Disaster Resource Center.....	Pg. 4
Statewide EMA Innovations.....	Pg. 5
Disaster Policy & Research.....	Pg. 7
Preparedness Best Practices.....	Pg. 8
Responses Best Practices.....	Pg. 9
Disaster Recovery Best Practices.....	Pg. 10
Mitigation Best Practices.....	Pg. 11
Disaster News.....	Pg. 12
2025 Disaster Review.....	Pg. 12
Industry Innovations.....	Pg. 13
EM Innovations in Work.....	Pg. 14
Building a More Resilient Future.....	Pg. 16
Expertise: Community Preparedness.....	Pg. 17

Enhance Community Intelligence

Informed by Statistically Representative Surveys

Community surveys are a vital tool for emergency managers because they provide direct insights into the needs, vulnerabilities, hazard awareness, preparedness levels, and resilience of a community, enabling more effective and tailored disaster response strategies and decision-making. When employed with appropriate methods, these tools can yield reliable results that inform decision-making processes, such as resource allocation during crises or long-term resilience strategies. Key to this reliability is ensuring a representative sample, where the surveyed group mirrors the demographic, geographic, and socioeconomic diversity of the broader community to avoid biases that could skew findings. Furthermore, surveys must prioritize reliability—producing consistent results across repeated administrations—and validity, ensuring that questions accurately measure...

Continued on Page 5

Did You Miss a Previous Issue?

[Access the "Disaster News
You Can Use" Library](#)

Disaster History

Continued...

The '77 Blizzard and the Love Canal Environmental Epidemic

Continued

into surrounding areas. Scientifically, the site's geology played a key role: a permeable topsoil layer (4-6 feet deep) allowed chemicals to migrate easily, creating perched groundwater that infiltrated basements and yards. Over 82 compounds were identified, including benzene (a human carcinogen causing leukemia) and dioxins (linked to birth defects and cancers), which volatilized into air, dissolved in water, or adhered to soil particles. This migration was exacerbated by breaches in the canal's clay walls from construction and the lack of liners, turning the area into a "ticking time bomb" as drums rusted and released their contents.

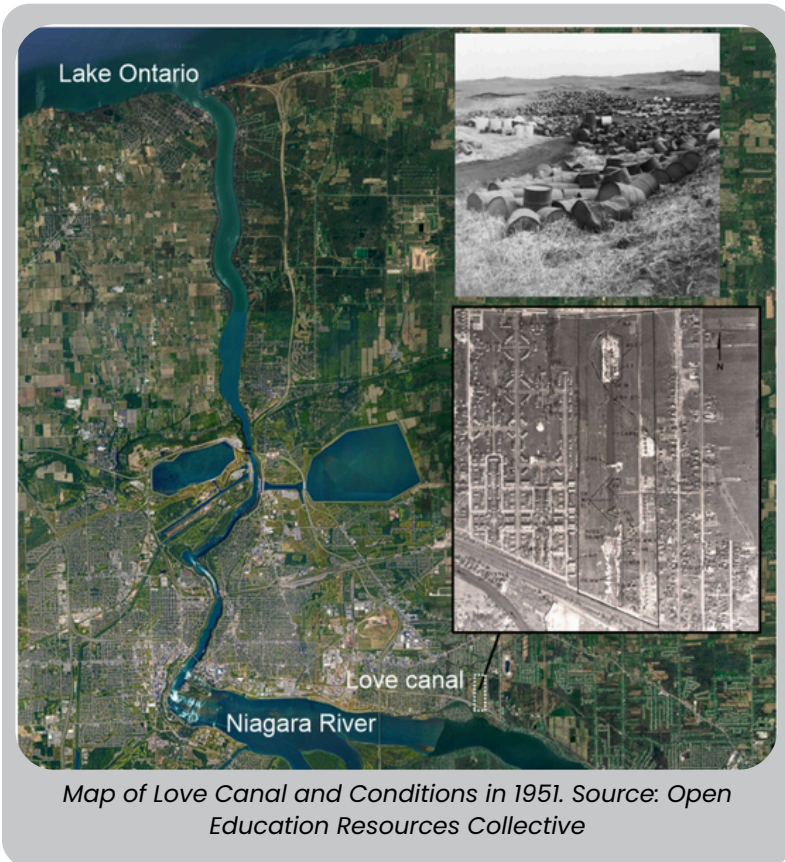
The resulting health epidemic devastated the community, with epidemiological studies revealing elevated rates of miscarriages (up to three times normal), birth defects (such as cleft palates, deafness, and club feet), cancers, asthma, epilepsy, and high white blood cell counts. Environmental impacts included dead vegetation, noxious puddles in yards, and contaminated creeks, while economic fallout encompassed plummeting property values, \$400 million in cleanup costs, and government buyouts of over 200 homes totaling \$7 million initially. Social and health effects were profound: 950 families were evacuated,

leading to psychological trauma, family disruptions, and long-term health monitoring for conditions like leukemia and respiratory issues. The disaster, declared a federal emergency in 1978—the first for a human-made event—highlighted vulnerabilities in low-income communities built on undisclosed hazards.

Almost 50 years later, the Love Canal area has undergone significant recovery, with cleanup completed in 2004 and removal from the Superfund National Priorities List. Remediation included installing a 40-acre synthetic cap, leachate collection systems, and treatment plants to contain and process contaminants. The neighborhood, renamed Black Creek Village, saw about 260 homes renovated and resold, with 150 acres repurposed for light industrial use. Ongoing operations, maintenance, and monitoring by Occidental Chemical (Hooker's successor) and the EPA ensure no exposure, with five-year reviews confirming safety as of the latest in 2024. Some residents remain, and while concerns about liner longevity persist, EPA assessments indicate the site poses no current threat to health or the environment.

Environmental cleanup represented the largest share of the disaster's economic burden, spanning 21 years from 1978 to 1999 under the Superfund program. The total cleanup cost is commonly cited at approximately \$400 million, covering activities such as installing a 40-acre containment cap, leachate collection and treatment systems, sewer and creek remediation, and waste incineration. Occidental Chemical Corporation (successor to Hooker Chemical) ultimately bore much of the liability, agreeing to pay \$98 million in 1994 for New York State's cleanup costs and \$129 million in 1995 for federal costs, totaling \$227 million in reimbursements. Economic recovery efforts focused on revitalizing the area after cleanup, with the site delisted from the Superfund National Priorities List in 2004. Overall, the disaster's total economic toll, including cleanup, relocations, and health-related claims, has been ...

Continued on Page 3



Disaster History

Continued...

Love Canal – Influence on EM, Environmental, & Public Health

Continued

estimated in various analyses to exceed \$500 million (2025 USD).

Contemporary lessons from Love Canal emphasize the need for transparency in hazardous waste management and community empowerment, as grassroots activism by residents like Lois Gibbs forced governmental action. For the emergency management community, it underscores preparing for "slow-onset" disasters through interagency coordination, rapid health assessments, and equitable relocation protocols to protect vulnerable groups like pregnant women and children. The event profoundly influenced the environmental industry by catalyzing the Comprehensive Environmental Response, Compensation, and Liability Act (CERCLA, or Superfund) in 1980, which funds cleanups and holds polluters accountable. It also spurred amendments to the Resource Conservation and Recovery Act (RCRA) for "cradle-to-grave" tracking of hazardous wastes. Additionally, the Love Canal disaster significantly influenced the public health industry by highlighting the need for better epidemiological methods to study long-term effects of hazardous waste exposure on communities, leading to more rigorous approaches in environmental epidemiology, including improved exposure assessment, biomonitoring, and longitudinal health tracking for affected populations. The Love Canal Environmental Disaster also spurred the creation of key institutions and policies, such as the Agency for Toxic Substances and Disease Registry (ATSDR) under the 1986 Superfund Amendments, which conducts public health assessments and health studies at contaminated sites nationwide, helping to build trust, advance community involvement in health research, and integrate environmental health into broader public health practice.

Today, mitigation efforts include advanced containment technologies like impermeable liners and groundwater monitoring wells at active sites, brownfield redevelopment programs to safely reuse contaminated land, and right-to-know laws under the Emergency Planning and Community Right-to-Know Act (EPCRA). Local Emergency Planning Committees (LEPC) are rooted in the EPCRA, which mandates these committees for developing and implementing emergency response plans for hazardous materials and promoting community awareness. Through these programs, EPA inventories assess thousands of sites annually, while state programs enforce stricter disposal regulations. Public involvement in environmental justice initiatives ensures communities are informed and engaged, preventing repeats of such tragedies through proactive risk assessment and sustainable practices.

References

- Center for Health, Environment & Justice. (n.d.). Love Canal factpack.
- Colten, C. E., & Skinner, P. N. (1996). The road to Love Canal: Managing industrial waste before EPA. University of Texas Press.
- DePalma, A. (2004, March 18). Love Canal declared clean, ending toxic horror. The New York Times.
- Eckel, P. (1979). The Love Canal tragedy. EPA Journal.
- Hoff, A. (1995). Love Canal: A case study in environmental liability. University of Michigan Ross School of Business.
- New York State Department of Health. (1978). Love Canal: Public health time bomb.
- Newman, A. (2016). Love Canal: A toxic history from colonial times to today. SUNY Press.
- U.S. Department of Justice. (1995, December 21). Occidental to pay \$129 million in Love Canal settlement (Press release).
- U.S. Environmental Protection Agency. (n.d.). Love Canal Superfund site profile.

Emergency Management and Disaster Recovery: Building a More Resilient Future

[Learn More](#)



Disaster Resource Center

Free Tool Kits & Resources

Whether you are dealing with a declared disaster or need program guidance, ISC is there to help you.

Hazard-Specific Tool Kits



Disaster Resource Center



Best Practices Library

Industry Best Practices

Don't Let Disaster Strike Twice: Navigating the Complex World of Post-Disaster Funding



In the wake of a disaster, the road to recovery can be long and arduous. Applicants are often left to navigate a complex maze of requirements, deadlines, and paperwork, all while trying to rebuild their lives and communities. The consequences of not following proper protocol can be severe, leading to denied or de-obligated funds, leaving applicants without the resources they need to recover.



Written by [Name]

On-Call Expert Support



Increase Community Intelligence

Continued...

Statistically Represented Surveys to Inform Resilience

Continued

intended concepts like vulnerability perceptions or evacuation preferences. Accuracy, in turn, depends on minimizing errors through clear question design and robust data analysis, transforming raw community feedback into actionable intelligence that enhances emergency response efficacy

In practice, achieving these standards involves rigorous social research methodologies. For instance, stratified sampling techniques can help secure a representative sample by dividing the population into subgroups based on factors like age, income, or location, then randomly selecting participants from each. Reliability can be bolstered through pilot testing surveys to refine wording and reduce variability, while validity is upheld by aligning questions with established, evidence-based disaster-sociological and emergency management frameworks. Accuracy is further ensured by employing statistical tools to account for non-response bias or measurement errors, often using confidence intervals to quantify uncertainty. When these elements are integrated, community surveys transcend mere opinion-gathering, providing emergency managers with data that is both trustworthy and applicable, thereby reducing the guesswork in high-stakes scenarios and providing a confidence level that is measurable.

Community surveys also synergize with typical local emergency management engagement processes, such as mitigation planning, to foster comprehensive emergency management. In mitigation planning, surveys can solicit input on perceived hazards, like flooding or wildfires, helping to identify vulnerabilities and prioritize actions in hazard mitigation plans required under frameworks like the Disaster Mitigation Act. This integration promotes stakeholder buy-in, as residents feel involved, enhancing the plan's validity through diverse perspectives, and reaching underserved populations, to ensure a more representative sample of the community. When done correctly, survey instruments can be aligned to established frameworks for comprehensive emergency management, providing...

Continue on Page 6

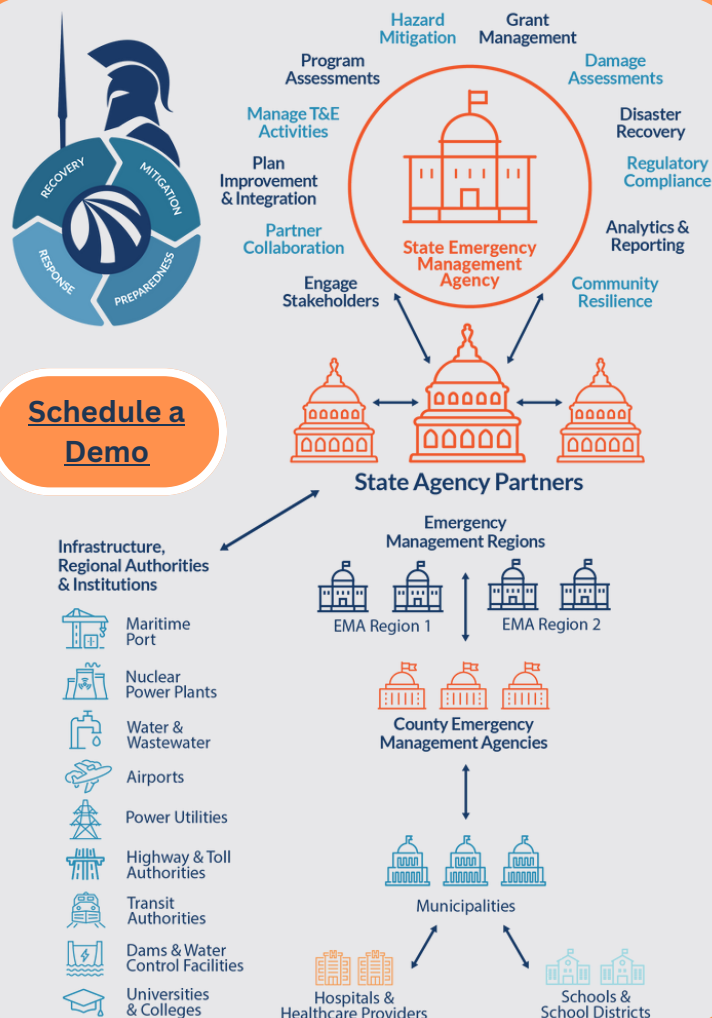
Statewide Comprehensive EM Program Management Solution



D Y S S E U STM

EM365

OdysseusTM offers state emergency management agencies a software solution for managing a unified statewide comprehensive emergency management program. OdysseusTM "system-of-systems" architecture gives state EMA's a force multiplier that goes beyond managing EOCs.



Increase Community Intelligence

Continued...

Statistically Represented Surveys to Inform Resilience

Continued

valuable information to emergency managers and community leaders to create more holistic strategies that address long-term community resilience.

Beyond mitigation, community surveys play a pivotal role in other phases of comprehensive emergency management, including preparedness and response. For preparedness, surveys can assess household readiness, such as the availability of emergency kits or knowledge of evacuation routes, allowing managers to tailor education campaigns that boost community-wide reliability in self-protection measures. During response phases, real-time surveys—deployed via digital tools—can gather on-the-ground feedback to validate assumptions about affected areas, ensuring accurate deployment of resources like shelters or aid. This dynamic application underscores how surveys, when designed with validity in mind, bridge gaps between official plans and actual community experiences, leading to more effective outcomes.

ISC's Statistically Represented Approach for Whole Community Preparedness



7 Considerations for Creating Reliable Community Resilience Surveys

The following are 7 essential considerations, drawing from ISC's established methodological principles for developing surveys that achieve 95% confidence:

1. **Define Clear Objectives and Conceptual Framework for the Resilience Study.**
2. **Select an Appropriate Sampling Strategy for Representativeness:**
3. **Design Methodologically Valid and Reliable Question & Response Options**
4. **Incorporate Ethical and Inclusive Practices**
5. **Choose Effective Data Collection Method to Achieve Accuracy and Proficiency**
6. **Conduct Pilot Testing and Iteration Improvement**
7. **Develop a Robust Data Analysis and Reporting Plan to Discover Causation & Data Relationships**

Case Study: Community Resilience Studies

Public Health Resiliency Study: ISC developed and conducted a community study to better understand vaccine hesitancy and community perceptions that drive preparedness. Over 100,000 surveys were distributed. Survey achieved 95% confidence level and was analyzed with regression analysis.

Mitigation Resiliency Study: ISC developed and conducted a community study to better understand how the public and private-public partners perceive risks to the various hazards and what drives their decision-making for hazard mitigation. Over 80,000 surveys were distributed in 5 languages. Responses were categorized by community and achieved a 95% confidence level.

Wildfire Resiliency Study: ISC conducted a resident community preparedness study to understand community behaviors for future wildfires and other disasters. The methodology used resulted in the distribution of 60,000 surveys. The community resiliency study achieved 95% confidence with 3% margin of error. Most importantly, it was aligned with a 2007 study proving a decade's worth of trend analysis.

Disaster Policy & Research

November 2025

News & Policy

- [White House officials abruptly postpone final meeting of Trump-created FEMA task force](#)
- [The future of FEMA: Lessons from 2025 and what comes next](#)
- [FEMA chief given lie detector test after leak of private meeting](#)
- [FEMA's terrible, horrible, no good, very bad year](#)
- [Emergency manager connects on-the-ground experiences with systemic change](#)
- [Cole Shirley named Berkeley County emergency management director](#)
- [State auditor criticizes North Carolina's lack of standardized disaster response process](#)
- [Trump freezes efforts to blunt future disasters](#)
- [Emergency managers regroup as FEMA pulls back support](#)
- [Everyone agrees FEMA needs to change. The question is how](#)
- [Wildfires as a tool for terrorism](#)
- ['Don't get in my way': New FEMA chief plans 'Mission Analysis' of nation's disaster management agency](#)
- [Massachusetts federal judge orders FEMA to restore billions in canceled mitigation funding](#)
- [North Carolina Helene recovery surpasses \\$1 billion in FEMA funding as \\$33 million approved](#)
- [FEMA employees who signed letter critical of Trump unsuspended, then resuspended](#)
- [A West Texas county wants to better prepare for floods. Paying for it will be tricky.](#)
- [Reclaiming practical resilience](#)
- [Cyber attack disrupts emergency alert system](#)
- [Transforming disaster financing: An alternative to FEMA funding](#)

Research & Innovations

- [Only one in 10 Hawai'i households meets emergency preparedness standards](#)
- [Collaborative prediction: Allocating wildfire resources early](#)
- [Building safer communities through FEMA's new playbook for building code enforcement](#)
- [How smart tech can transform the disaster recovery process in Jamaica](#)
- [Evacuation lessons from the 2025 LA wildfires](#)
- [Tropical cyclones: Why are some countries at risk?](#)
- [Can AI help forecasters better predict destructive hurricanes?](#)
- [N.C. pilots flood mitigation strategy w/o FEMA funds](#)
- ['The Maui Method': A new fix for a major fire hazard in Hawai'i](#)
- [How advanced AI-powered gun detection improves campus safety](#)
- [Enhancing EOCs with AI: A new frontier in emergency management](#)
- [New Natural Disaster Resilience dashboard shows need for infrastructure policy, Rice Baker Institute expert says](#)

International News

- [From earthquakes to wildfires, Canada is woefully ill-prepared for disasters](#)
- [Government of Canada to boost aerial firefighting capacity to protect communities from wildfires](#)
- [Aboriginal leaders come together with NSW government to strengthen disaster resilience](#)
- [Rebuilding smarter in Jamaica](#)
- [Sri Lanka's cyclone death toll climbs to 355, with 366 missing](#)
- [Death toll from Indonesia floods passes 1,000 as authorities grapple with relief efforts](#)
- [Emergency Management Bill introduced](#)
- [Europe faces worst wildfire year on record as fire seasons grow longer and more destructive](#)
- [Japan warns of possible megaquake after powerful earthquake, raising fears of a 98-foot tsunami](#)
- [In Fukushima's evacuated zone, international experts train for effective nuclear emergency response](#)
- [One million households without power in Ukraine after Russia attacks energy grid](#)



Preparedness Best Practice: *Special Event Crisis Preparedness*



Across the nation, communities and venue owners are responsible for managing thousands of special events for sporting events, festivals, concerts, conventions, tourist attractions, and other public and

private mass gatherings. These events not only draw hundreds of thousands of people into a community or specific venue, magnifying the potential of a crisis or the consequences of a natural emergency or disease outbreak, but some events may be a potential target for terrorism or civil unrest.

Whether these events are designated as a National Special Security Event, past special event crises have demonstrated that communities and venue owners must be well prepared. Pre-incident emergency planning and crisis management strategies will help manage the crisis response operations and identify strategies to successfully manage communication, reputational risk, and recovery.

Special Event Crisis and Emergency Incidents are on the Rise

Large public and private special events are on the rise but so too are the number of large-scale emergencies that result in mass casualties and civil disturbance. Large special events serve as economic drivers for many communities; however, special event organizers must also consider that in today's world there are an increasing number of security concerns they must be prepared to handle. Here are a few trends that every community, venue owner, and special event organizer must consider.

Emergency Preparedness Best Practices for Special Events

Emergency preparedness for special events goes well beyond stationing security guards at various locations to manage the risk exposure and potential consequence of a crisis. Crisis and emergency preparedness is a complex process that must be integrated into the operational elements of the event security so that readiness is maintained. Here are a few best practices and tips:

- Have extensive knowledge of the venue, inside and out
- Assess potential threats
- Determine attendee risks
- Develop venue-specific security plans
- Develop scalable emergency response strategies
- Develop crisis management and business resumption strategies
- Coordinate with community partners and first responders
- Train, exercise, and drill the plan with staff and community stakeholders
- Control the crowd
- Debrief and make improvements
- Stay connected
- Do not underestimate the importance of crisis and emergency preparedness.

Large Scale Emergencies on the Rise:

- According to the FBI, over the past twenty years there have been over 300 active shooter incidents resulting in almost 3,000 casualties and 1,000 fatalities.
- In 2020, the United States had a record number of public demonstrations that grew into civil disturbances resulting in over \$2 billion in damages according to the Verisk Property Claims Services.
- According to the Center for Strategic & International Studies, over the past twenty-five years there have been over 900 terrorist attacks and foiled plots in the United States. These terrorist plots were made by religious, left-wing, right-wing, and ethnonationalist groups.
- Research indicates that disease outbreaks have been increasing significantly since 1980 and this risk will continue beyond the COVID-19 pandemic and into the decades to come.
- According to the International Disaster Database, natural disasters and large-scale emergencies are on the rise, globally and the United States. Although deaths from natural disasters are down, the cost and economic loss from natural disasters has risen exponentially.

Response Best Practices: *Evidence-Based Evacuation Planning*



Evacuation Planning – Critical Tool for Communities

Evacuation orders are a common instrument for Emergency Managers to move individuals away from impending hazard threats. An evacuation order is no easy task. Planning, training, and exercising the processes and procedures of a mass evacuation is critically important.

Leverage Evidence– Based Lessons Learned

Evacuations have been studied for over 50 years by social scientists, creating a large repository of evidence-based knowledge on the subject that is rarely referenced. ISC has merged this empirical evidence with modern lessons learned and best practices to provide our clients with evacuation plans that are germane to their community and include reliable operational strategies for evacuating or sheltering-in-place



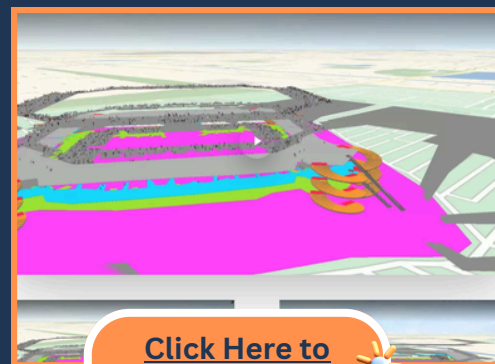
Case Study:

Evacuation Modeling Using Social Behavior Analysis

Communities cannot underestimate the importance of conducting an evacuation study and the value of evacuation clearance time modeling to help facilitate good decision-making and operational effectiveness. Recent new advancements in technology will not only improve decision-making but also serve as an invaluable tool to operationally visualize evacuation behavior patterns and improve evacuation operations.

ISC recently conducted all-hazards evacuation clearance time study utilizing a robust and state-of-the-art modeling software that allows users to systematically analyze multimodal evacuation strategies across the full transportation network to include pedestrian flow patterns. Data inputs can be manipulated to include statistical data of known evacuation behaviors such as type of vehicles, number of vehicles pulling trailers, and other evacuation behaviors. The following pictures and video simulate the mass evacuation of a 65,000-seat stadium based on an active assailant/terrorist threat scenario.

Crowd flow modeling can help to understand security needs to manage pedestrian flow patterns, crowd flow patterns for concerts, mass evacuation of stadiums, and many other applications for crowd management strategies.



[Click Here to
Learn More](#)



Recovery Best Practices



FEMA's Simplified Procedures

Take Advantage of the APP CERT Project Process

By Glen LaFond, ISC Recovery Program Manager

After a disaster strikes and an applicant has requested Public Assistance help from FEMA, the process of submitting all damages along with supporting documentation is often long and arduous. One method to help speed up the obligation of small, completed work projects is by submitting the projects as APP CERT projects.

In August 2022, FEMA increased the established threshold for Small Project maximum for the agency's Public Assistance (PA) program to \$1 million. The goal was that the increased threshold would reduce the administrative burden on state, local, tribal, or territorial (SLTT) governments and private non-profit (PNP) organizations receiving FEMA financial grants following a disaster. The PA Simplified Procedures Policy streamlines application procedures for Small Project funding under the PA program, simplifies the implementation of the PA program and supports rapid recovery for applicants. The use of simplified procedures, such as submitting self-certified estimates and summary reports, should allow applicants to receive funding early and promote rapid recovery from the disaster.

[Click here to learn more about FEMA's Simplified Procedures.](#)

Learn More About FEMA's
Simplified Procedures

Critical Operation: Detailed Damage Assessments

360 Degree Damage Inventory Windshield Survey

With the introduction of new FEMA program timelines and opportunities, documenting your disaster damages has never been more important. Being able to show your community before and after the devastation is critical in securing vital disaster assistance funding and advocating to FEMA and others well after the disaster has left the mainstream news cycle. With our 360 Degree Damage Windshield Survey, communities can not only conduct detailed street-level damage assessments of their community within hours but also document the before/after the disaster for future reference. This new technology serves as a best practice for securing disaster assistance funding for your community. [Click on the image to see this technology in action.](#)

Read more on the Community Disaster Recovery Success Series.

[Part 1: Establish a Recovery Governance](#)

[Part 2: Create a Recovery Management Strategy](#)

[Part 3: Disaster Recovery Committee Coordination](#)

[Part 4: Thoroughly Assess Impacts & Needs](#)

[Part 5: Importance of Community Outreach](#)

[Part 6: Be Prepared for Disaster Recovery](#)

[Part 7: Take Advantage of Grant Opportunities](#)

[Part 8: Disaster Recovery Funding Strategy](#)

[Part 9: Autonomous & Inclusive Decision-Making](#)

[Part 10: Track and Report Recovery Success](#)

[Part 11: Measure Betterment & Resiliency](#)

See the 360 Damage Inventory Windshield Survey in Action



Learn More About Disaster
Recovery Innovations

Mitigation Best Practices



Creating and Maintaining a Sustainable Hazard Mitigation Program

There is a growing challenge for communities of all sizes to regularly update, maintain, and implement their hazard mitigation plans. However, according to FEMA, over half of the nation's municipal and county mitigation plans have fallen out of compliance and many communities struggle to implement key mitigation initiatives. As a result, communities have wasted the initial investment to develop mitigation plans and find themselves spending the same effort, if not more, in developing a new, compliant plan and be eligible for pre- and post-disaster funding.

ISC's core preparedness philosophy takes a holistic approach to crisis management, prevention, and recovery. We craft an interconnected strategy of planning, training, and crisis response to ensure a community's needs are met in totality.

Our comprehensive and programmatic solutions are executed by knowledgeable staff who have developed plans for some of our Nation's largest communities. We are a team of experts who have implemented billions of dollars in pre- and post-disaster mitigation projects. Our innovations focus on meaningful mitigation processes and outcomes while easing the burden in developing, maintaining, and implementing your community's mitigation investments.



Click below to watch a video on ISC's hazard mitigation program management strategies.



[Learn More About Our Work](#)

▶ MITIGATION CORE CAPABILITIES:

- Program Management and Support
- Risk and Disaster Resilience Assessment
- Community Resilience
- Long-Term Vulnerability Reduction
- Threats and Hazards Identification
- Comprehensive Emergency Preparedness and Planning Development
- Hazard Mitigation and Disaster Recovery
- Technical Support
- Committee and Workgroup Governance Development
- Community Outreach
- Grant Management and Procurement Support
- Community Technical Surveys & Analysis
- Mapping and Geospatial Analysis

Disaster News

Current FEMA Disaster Declarations: December 2025

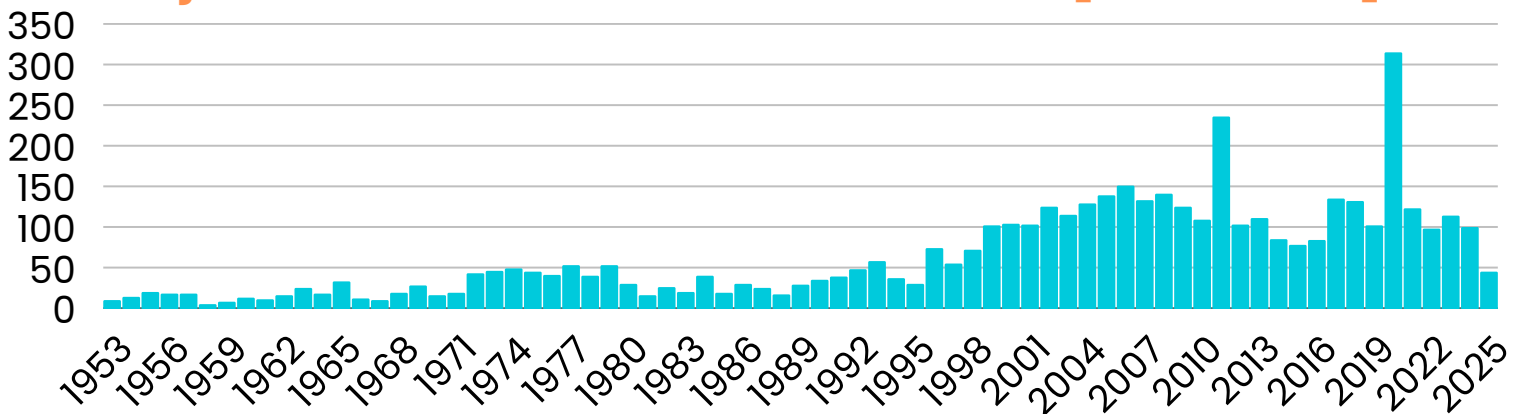
As we wrap up 2025, the month of December has been slow for Presidential Disaster Declarations. Kansas received a major disaster declaration for severe storms, straight-lined winds and flooding (DR-4897-KS). Washington (EM-3629-WA) and Montana (EM-3630-MT) received emergency declarations for severe storms and flooding. Oklahoma also received a Fire Management Assistance declaration for the Sunny Fire (FM-5615-OK).



FEMA

Over the past year, President Trump declared 45 major disasters, which is significantly lower over the past two decades. The following graph represents the number of major disasters declared by US Presidents over the past 72 years.

Major Presidential Disaster Declarations [1953 - 2025]



D Y S S E U S

EM365

[Schedule a Demo](#)

Maximize Vital Community Disaster Recovery & Mitigation Funds



Odysseus Features for Disaster Grant Management Solutions



Industry Innovations



D Y S S E U STM

EM365

672%

INCREASE IN
PROGRAM EFFICIENCY

300^x

STAKEHOLDER
COLLABORATION

99%

REGULATORY &
PROGRAM COMPLIANCE

54^x

RETURN ON
INVESTMENT

97%

PERFORMANCE
RATING

The Industry's First Comprehensive Emergency and Disaster Program Management Software

OdysseusTM offers a suite of tools and systems designed, dedicated to the efficient management of comprehensive disaster and emergency management programs. The union of technological and programmatic features offers organizations an efficient and effective method to systematically design, develop, maintain, and continually improve all elements of a comprehensive emergency management program.



Click Here to
Learn More About Our
Innovative Technology

EM Innovations in Work

Odysseus™ EM-365

Statewide Comprehensive EM Program Management

State Emergency Management Agencies

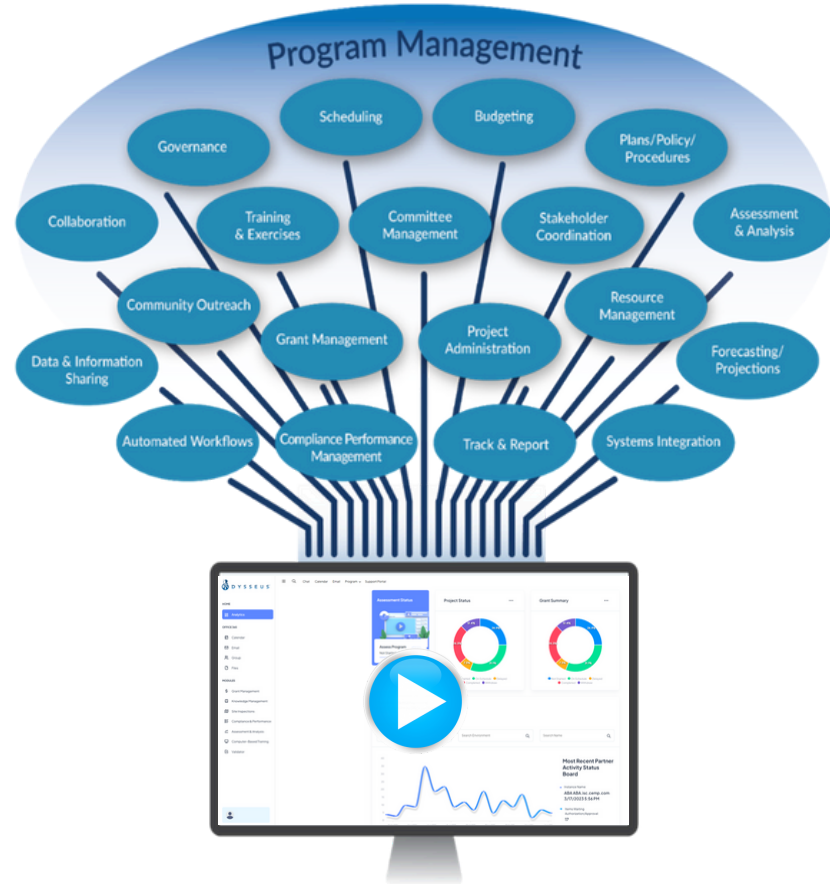
Although they provide much needed resources and capabilities during the time of a crisis or disaster, a State emergency management agency's (EMA) operational focus extends far beyond the response phase of an incident. The reality is that the success of a State EMA's response operation is intimately related to its ability to systematically track, guide, direct, monitor, manage, and administer all aspects of a comprehensive emergency management program across all state agency, county and municipal government partners, regional authorities, and other stakeholders.



Although the value is unmeasurable, many states think that coordinating a statewide comprehensive emergency management program would be a formidable task that would require significant resources. That's not true anymore.

Odysseus™ offers state emergency management agencies a software solution for managing a unified statewide comprehensive emergency management program. Odysseus™ "system-of-systems" architecture gives state EMA's a force multiplier to manage EMA program requirements statewide.

Designed by our team of leading emergency managers and software technicians, Odysseus™ offers a unique State EMA program management platform. It is a program management tool and allows for the full integration of other incident management software programs.



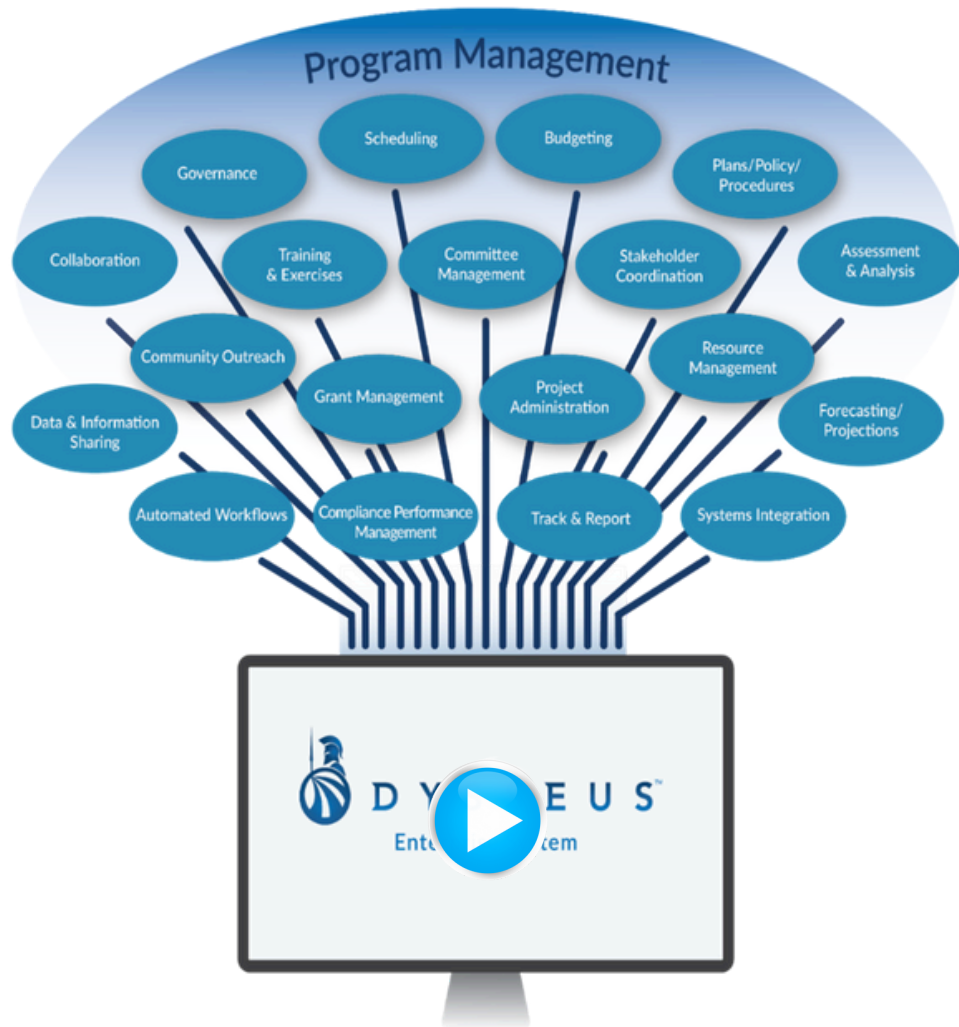
ODYSSEUS™ IN WORK

Disaster Recovery – FEMA Public Assistance Streamlining the FEMA Public Assistance Program

Odysseus Features for FEMA Public Assistance Solutions



- Conduct Field Survey of Damages
- Report FEMA Damage Inventory
- Track Debris Monitoring
- Identify Status of FEMA Projects, Payments & Disbursements
- Assess Hazard Mitigation
- Real Time Tracking of FEMA PA Funds
- Monitor FEMA Compliance & Program Reporting
- Manage & Track Progress of Community Recovery Projects
- Track Eligible DAC and non-DAC Expenditures
- Evaluate Contractor Performance
- Expedite Programmatic Closeout
- Store Supporting Documentation
- Train Staff on FEMA PA Requirements and Drive Accountability
- Compatibility & Integration with Other Financial Management Systems
- Maximize Federal Funding Possibilities
- Identify Recovery Funding Gaps
- Adaptable and Customizable to Meet Your Needs



Building a More Resilient Future



INTEGRATED SOLUTIONS
CONSULTING

**Click Below to Learn How We
Build a More Resilient Future**



ABOUT US

Integrated Solutions Consulting is a professional services firm focused on developing and implementing comprehensive crisis and consequence management solutions. We are a team of innovative problem-solvers that combine experience and evidence-based knowledge to deliver practical, best practice results across multiple industries to make communities safer and more resilient

Top Supplier
Performance Rating
dun & bradstreet
97.1%
Successful
Performance

We help our clients by providing comprehensive emergency management consulting services that use data-driven research, sophisticated crisis modeling and seasoned consultants to help our clients manage unexpected emergency and disaster situations.



Expertise: Preparedness

The Value of Preparedness

Recent events remind us that every community must make a continued investment in preparing for the next emergency or disaster. Empirical evidence has shown a direct correlation between the level of preparedness and the level of resiliency in a community. Specifically, the more prepared communities are, the greater their ability to effectively respond to and recover from disaster and minimize the impact of a disaster.



INTEGRATED SOLUTIONS
CONSULTING

However, the most resilient communities go beyond simply developing a response plan that “checks the box” and supported by periodic training and scenario-based exercises. The stark reality is that our communities are becoming increasingly complex with intricate relationships and interdependencies between our social, built, and natural environments. These community conditions often intersect with our hazard risks, impacting a community for years to come.

THE VALUE OF PREPAREDNESS

