

DISASTER NEWS YOU CAN USE

WWW.I-S-CONSULTING.COM/



March 2024



Whats Inside:

Disaster History.....	Pg.1
Industry News.....	Pg.2-5
Industry Best Practices.....	Pg. 6-10
Innovative Technology.....	Pg.11

Disastrous Dates Revisited

A March to Remember: The Devastating 1925 Tri-State Tornado Outbreak

Ninety-eight years ago this month, on March 18, 1925, the Midwestern and Southern United States experienced one of the most devastating tornado outbreaks in recorded history. The Tri-State Tornado Outbreak spawned at least 12 significant tornadoes across Missouri, Illinois, Indiana, Alabama, and Kansas, leaving an indelible mark on the nation's psyche and cementing 1925's status as the deadliest tornado year in U.S. history.

The outbreak's most notorious and destructive twister was the "Tri-State Tornado" itself. This monstrous tornado carved a path of destruction 219 miles long across three states, setting a record for the longest continuous tornado track that still stands today. With 695 lives lost, the Tri-State Tornado remains the single deadliest tornado in U.S. history and the second-deadliest ever recorded globally. Experts who have examined the damage retrospectively believe that it would have been rated an F5, the highest level on the original Fujita Tornado Damage Scale, had it occurred during the modern era.

The devastation wrought by the Tri-State Tornado and its counterparts was catastrophic and widespread. Entire towns were leveled, reduced to piles of rubble and debris. In Murphysboro, Illinois, 234 people perished as the tornado tore through the heart of the city, leaving a post-apocalyptic landscape in its wake. The town of Gorham, Illinois, was quite literally erased from the map, with only foundational remnants of buildings remaining as a testament to the tornado's fury. The financial toll was staggering: losses totaled \$16.5 million in 1925 USD (equivalent to approximately \$297 million in 2023), a nearly incomprehensible sum for the time. Continued on Page 13.....

Industry News

Current Disaster Declarations in the United States: Impact on the Nation, Economy, and Communities

The United States has experienced a series of natural disasters in the first quarter of 2024, with several states facing severe storms, flooding, and wildfires. As an Emergency Management and Disaster Recovery consulting firm, Integrated Solutions Consulting, Corp. closely monitors these events to assess their impact on the nation, its economy, and the affected communities.



Major Disaster Declarations:

1. Vermont Severe Storms and Flooding (DR-4762-VT)
2. New Hampshire Severe Storm and Flooding (DR-4761-NH)
3. California Severe Storm and Flooding (DR-4758-CA)

The severe storms and flooding in Vermont, New Hampshire, and California have caused significant damage to infrastructure, homes, and businesses. These events have displaced residents, disrupted local economies, and strained emergency response resources. The recovery process will require substantial federal, state, and local collaboration to rebuild affected areas and support impacted communities.

Fire Management Assistance Declarations:

1. Wyoming Happy Jack Fire (FM-5490-WY)
2. Texas Smokehouse Creek Fire (FM-5488-TX)
3. Texas Windy Deuce Fire (FM-5487-TX)
4. Oklahoma Catesby Fire (FM-5489-OK)

Wildfires in Wyoming, Texas, and Oklahoma have threatened lives, property, and natural resources. These fires have necessitated evacuations, road closures, and the deployment of firefighting resources from multiple agencies. The economic impact of these wildfires includes the direct costs of suppression efforts, as well as the indirect costs of business interruptions and reduced tourism.



The cumulative effect of these disasters on the United States economy is significant. The costs associated with emergency response, relief efforts, and recovery can strain federal, state, and local budgets. Additionally, the disruption of local economies and the displacement of residents can have long-lasting effects on the affected communities.

Industry News

Current Disaster Declarations in the United States: Impact on the Nation, Economy, and Communities

As the nation works to support the impacted states and communities, it is crucial to prioritize resilience and preparedness. Investing in mitigation efforts, such as infrastructure improvements and land-use planning, can help reduce the impact of future disasters. Furthermore, strengthening partnerships between government agencies, non-profit organizations, and the private sector can enhance the nation's ability to respond to and recover from these events.

Integrated Solutions Consulting, Corp. remains committed to supporting our clients and partners in navigating the challenges posed by these disasters. Our team of experts is ready to provide guidance and assistance in all aspects of emergency management and disaster recovery, ensuring that affected communities can build back stronger and more resilient.

As we move forward, it is essential to learn from these experiences and adapt our strategies to better prepare for future disasters. This includes investing in advanced technology, such as early warning systems and risk assessment tools, to help mitigate the impact of natural hazards. Additionally, promoting community engagement and education can empower residents to take proactive steps in protecting their lives and property.

Integrated Solutions Consulting, Corp. will continue to monitor the situation closely and provide updates as needed. We are dedicated to staying at the forefront of emergency management and disaster recovery practices, ensuring that we can deliver the most effective solutions to our clients and the communities they serve. Together, we can work towards building a more resilient nation, prepared to face the challenges posed by natural disasters.

**Emergency
Management and
Disaster Recovery:
Building a More
Resilient Future**

[Learn More](#)



Industry News

2024 Hurricane Season: Is Your Community

Prepared for a Damaging Storm?

By working closely with seasoned ISC recovery consultants and project managers, communities can ensure they have the necessary support to navigate the complexities of post-hurricane recovery and emerge safer and more resilient.

The importance of proactive hurricane planning is also a key focus for the Federal Emergency Management Agency (FEMA). "Communities that invest time and resources into pre-disaster preparedness and mitigation efforts are better positioned to withstand the impacts of hurricanes and recover more quickly in the aftermath," noted FEMA Administrator, Peter Gaynor, in a recent press release. "We strongly encourage all coastal communities to review and update their emergency plans, conduct regular training and exercises, and actively engage with their residents to promote personal preparedness measures."

One critical aspect of community hurricane preparedness is ensuring that residents have access to reliable information and resources to help them plan for and navigate the challenges of an impending storm. ISC works with local officials to develop comprehensive public outreach campaigns that educate residents on the importance of creating personal emergency plans, assembling disaster supply kits, and staying informed about evacuation orders and shelter options.

In addition to focusing on immediate response efforts, ISC also helps communities plan for the long-term recovery process, which can often take months or even years following a major hurricane. This includes assisting with the development of resilient rebuilding strategies that incorporate climate-adaptive mitigation measures, such as elevating critical infrastructure, implementing natural flood barriers, and adopting stronger building codes to minimize future storm damage.

As the 2024 hurricane season looms on the horizon, it is imperative that coastal communities prioritize their preparedness efforts and take proactive steps to build resilience against the growing threat of intense tropical cyclones. By leveraging the expertise of experienced disaster management consultants like ISC, following FEMA guidelines, and actively engaging with residents, municipalities can face the challenges of the upcoming hurricane season with greater confidence and emerge stronger in the face of adversity.

For more information on how Integrated Solutions Consulting can support your community's hurricane preparedness and recovery efforts, please click the link to our [Hurricane Toolkits](#).



Industry News

2024 Hurricane Season: Is Your Community Prepared for a Damaging Storm?

As the 2024 hurricane season rapidly approaches, coastal communities across the United States are facing the daunting task of ensuring they are adequately prepared to withstand and recover from the potential devastation of intense tropical cyclones. With climate change contributing to the increasing frequency and severity of hurricanes, experts emphasize that comprehensive disaster recovery plans are more critical than ever in minimizing the long-term impacts on local infrastructure, economies, and public well-being.

The National Oceanic and Atmospheric Administration (NOAA) has released its initial forecast for the 2024 Atlantic hurricane season, predicting above-average activity with 14-19 named storms, 7-11 hurricanes, and 3-6 major hurricanes (Category 3 or higher) expected to form between June 1st and November 30th. This outlook serves as a stark reminder of the urgent need for coastal municipalities to have well-coordinated emergency response and resilient rebuilding strategies in place long before the first storm makes landfall.

Integrated Solutions Consulting (ISC), a premier disaster management firm with decades of hands-on experience, is at the forefront of helping communities develop customized hurricane preparedness plans that address their unique vulnerabilities and strengths. "Every community faces different challenges when it comes to hurricane readiness," said ISC Disaster Recovery Expert, Glen LaFond. "By partnering with ISC to assess your specific risks, refine your response protocols, and streamline recovery contracting pre-storm, your municipality can gain the capacity to swiftly initiate equitable, efficient post-disaster rebuilding efforts, ultimately allowing for a faster community bounce-back."

ISC's integrated approach to hurricane preparedness and recovery encompasses a wide range of essential services, including effective emergency coordination, rapid damage assessments, infrastructure restoration, critical utility continuity, federal public assistance consulting, vulnerable resident prioritization, and climate-adaptive mitigation planning.



Industry Best Practices

Don't Let Disaster Strike Twice: Navigating the Complex World of Post-Disaster Funding



In the wake of a disaster, the road to recovery can be long and arduous. Applicants are often left to navigate a complex maze of requirements, deadlines, and paperwork, all while trying to rebuild their lives and communities. The consequences of not following proper protocol can be severe, leading to denied or de-obligated funds, leaving applicants without the resources they need to recover.

At Integrated Solutions Consulting, Corp. (ISC), we understand the challenges applicants face in securing funding for repairs and restoration. With years of experience in Emergency Management and Disaster Recovery consulting, we've seen firsthand the devastating impact of not following proper procedures. That's why we've compiled a list of helpful hints to guide applicants through this difficult time.

- **Establish a Cost Code and Database:** Create a dedicated accounting cost code to track all disaster-related expenses, including invoices, purchase orders, contracts, rentals, and force account labor (FAL). Additionally, set up a centralized database and logical file system for all parties to upload and track response and repair costs for damaged buildings, structures, roads, and facilities.



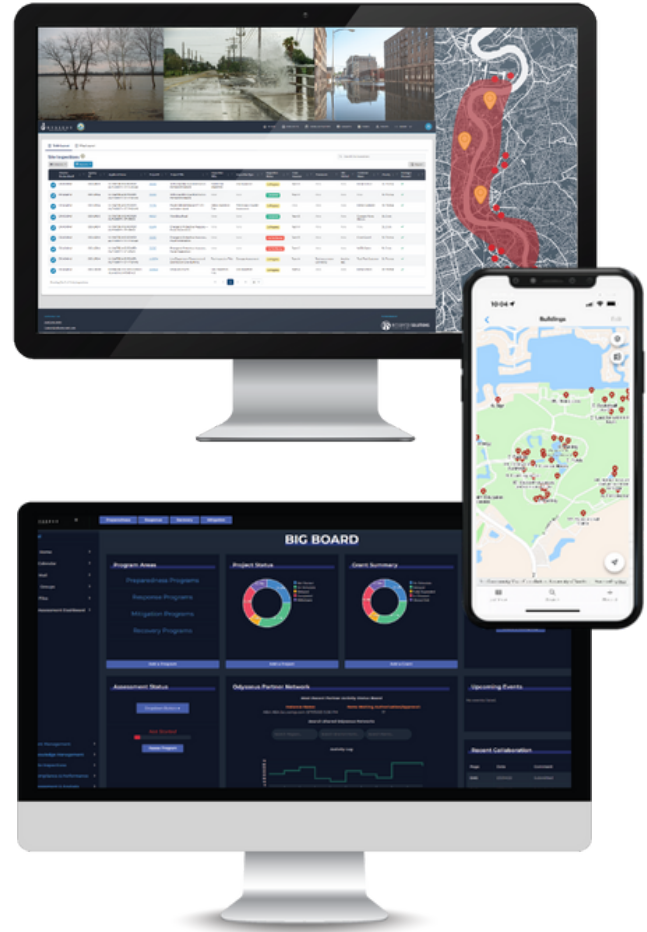
Written By: Glen LaFond
Senior Disaster Recovery
Consultant

Glen LaFond has more than 25 years combined of Emergency, Construction, Project, and Financial Management experience in both the public and private sector. For the past 15 years, Glen has worked on 16 disasters, including hurricane, flood, wind, and earthquake hazards.

Industry Best Practices

Don't Let Disaster Strike Twice: Navigating the Complex World of Post-Disaster Funding

- **Monitor Category B Expenses:** Pay close attention to Category B expenses, such as FAL, force account equipment (FAE), rentals, emergency contracts, and purchases, as these can easily be overlooked.
- **Adhere to FEMA Debris Policies:** Ensure compliance with all FEMA Category A debris policies to prevent de-obligation of funds.
- **Document Damages Thoroughly:** Identify and document all damages to buildings, structures, roads, and facilities. Include physical addresses, zip codes, state and federal road/highway numbers, and GPS coordinates in individual files within the database. Create written narrative scopes for each identified damage, detailing when and how they occurred, including any mechanical, electrical, plumbing, lighting, or equipment issues.
- **Capture Detailed Damage Assessments:** During damage assessments, take multiple photos from various angles and zoom levels. If possible, take accurate measurements of all damages and include sketches to convey the extent of the damage. If detailed assessments are not possible during the first visit, schedule a return date to gather all required damage, description, and dimensions (DDD) information.



SITE INSPECTION

TOOL

ASSESS, LOG, AND MANAGE DISASTER DAMAGES IN REAL-TIME

The Odyssey™ | SIT offers a ready-to-use application for real-time damage assessments and log site-specific damage inventory. The SIT is customizable, mobile friendly, and integrated with the GMT to streamline disaster recovery and the FEMA reimbursement process.

[Click Here to Learn More!](#)

Industry Best Practices

Don't Let Disaster Strike Twice: Navigating the Complex World of Post-Disaster Funding

- **Utilize GPS Technology:** Record GPS coordinates of all damages at the center or front entrance of buildings, or at start and stop locations for roads, fences, and linear-type damages. Consider using camera apps like 'Solocator' that include GPS coordinates on photos.
- **Gather and Retain Relevant Documents:** Collect all policies (insurance, procurement, labor, etc.) that FEMA will request. Retain any insurance-related documents, reports, cost estimates, and discussions, as well as damage-related documents, reports, estimates, and quotes.
- **Communicate with FEMA Before Repairs:** Before starting demolition and repair work, discuss the status with FEMA or ISC to ensure compliance and eligibility.
- **Explore Mitigation Opportunities:** Look for opportunities to strengthen facilities before repairing or rebuilding to mitigate future damage.
- **Follow Federal Procurement and Contracting Requirements:** Adhere to all Federal procurement and contracting requirements (2 C.F.R. Part 200) to prevent de-obligation of funding later in the process.
- **Partner with ISC:** Consider hiring ISC to conduct site inspections and assist with the above guidance. Our experience and software suite of services can help maximize grant dollars while saving money in the long run.

The consequences of not following these guidelines can be severe. Applicants may find themselves facing denied or de-obligated funds, leaving them without the resources they need to rebuild and recover. In the worst cases, communities can be left in ruins, with critical infrastructure and facilities left unrepaired for years.

Don't let disaster strike twice. By following these helpful hints and partnering with experienced professionals like ISC, applicants can navigate the complex post-disaster funding process more effectively and efficiently. Our team of experts is here to help you every step of the way, from initial damage assessments to final closeout. Together, we can help you build a stronger, more resilient community in the face of disaster.

Industry Best Practices

The Importance of Business Preparedness: A Wake-Up Call for Every Company



Imagine waking up one morning to find your business in shambles due to a natural disaster, a pandemic, or a cyber-attack. The consequences of being unprepared can be devastating, not only for your company but also for your employees, customers, and the community you serve. This is the harsh reality that Integrated Solutions Consulting, Corp. (ISC), wants to bring

to the forefront of every business owner's mind.

"We've seen it happen far too often," says Dan Martin, Principal, of ISC. "Businesses that have poured their heart and soul into building their brand and serving their customers, only to see it all crumble because they didn't have a solid business continuity plan in place. It's heartbreaking."

The statistics paint a grim picture. According to ISC, 40% of businesses fail to reopen after a disaster, and another 25% fail within one year. Over 90% of companies that are unable to restore operations within five days of a disaster fail within two years. These numbers are not just abstract figures; they represent real people whose livelihoods are at stake.

"When a business fails, it's not just the owners who suffer," says Lauren Martin, a senior consultant at ISC. "Employees lose their jobs, families lose their incomes, and communities lose a vital part of their economic fabric. It's a ripple effect that can be felt for years."

But the consequences of being unprepared go beyond financial losses. The emotional toll on business owners and their employees can be immense. The stress of trying to rebuild from scratch, the guilt of letting down customers and employees, and the sense of helplessness in the face of overwhelming odds can take a severe psychological toll.

Industry Best Practices

The Importance of Business Preparedness: A Wake-Up Call for Every Company

"I've seen strong, resilient business owners reduced to tears because they didn't have a plan in place," says Dan Martin. "They put everything they had into their business, and now they feel like they've let everyone down. It's a burden that no one should have to bear."

That's why ISC is on a mission to help businesses prioritize preparedness and continuity planning. The company offers a comprehensive range of Business Preparedness & Resiliency Services, including Business Continuity & Resumption Planning, Data and IT Recovery Plans, Disaster Resiliency Recovery Strategies, Risk & Vulnerability Assessments, Crisis Incident Management Plans, Crisis Communications, Cybersecurity Assessments, Workplace Health & Safety, Supply Chain Analysis, Corporate Preparedness Campaigns, Benefit-Cost Analysis, Training & Exercises, and Corporate Resiliency Assessments.

"We take a holistic approach to business preparedness," says Martin. "It's not just about having a plan on paper. It's about creating a culture of preparedness that permeates every level of the organization. It's about empowering employees to be ready for anything, and it's about building relationships with customers and the community that can withstand any crisis." ISC's approach has helped countless businesses weather the storms of uncertainty and emerge stronger on the other side. But the company knows that there is still much work to be done. "We can't prevent disasters from happening," says Martin. "But we can help businesses be prepared for when they do. And that can make all the difference in the world."

Don't wait until it's too late to prioritize business preparedness. The consequences of being unprepared are simply too high. By working with experienced consultants like those at ISC and implementing comprehensive strategies, businesses can protect their operations, their employees, and their communities, and emerge stronger from any challenge they may face.

"At the end of the day, it's about peace of mind," says Martin. "Knowing that you've done everything you can to prepare for the worst, so that you can focus on what really matters: serving your customers and making a positive impact in the world. That's what business preparedness is all about."

ODYSSEUS™ IN WORK

Disaster Recovery – FEMA Public Assistance Streamlining the FEMA Public Assistance Program

Although disasters are devastating and disruptive, it is important to recognize that every disaster brings about opportunity for communities to improve their conditions and to build a more resilient future. That is, IF communities effectively manage important federal disaster assistance programs such as the FEMA Public Assistance Program.

After a disaster, time is of the essence. It is crucial that communities are well prepared to manage their recovery efforts. Disaster recovery programs, like FEMA Public Assistance, allow for a limited amount of time to identify emergency expenditures, conduct damage assessments, complete debris removal operations, and report their



FEMA claim. Not properly documenting these costs or following the FEMA eligibility requirements will result in a loss of funding or adverse audit findings. It is a daunting task for even the most prepared and robust of communities. Communities need a suite of tools to manage the FEMA Public Assistance process quickly and accurately.

Maximize Vital Community Disaster Recovery Funds

Successful community disaster recovery is directly correlated to the community's ability to leverage all available funds to rebuild a more resilient future. Odysseus offers a unique perspective, providing a platform for communities to manage, track, and monitor disaster recovery funds from multiple federal and state grant assistance programs. The result is an opportunity to leverage every available dollar, identify gaps in disaster funding, and maximize your community's disaster recovery potential. By utilizing Odysseus, communities can streamline the complex process of securing and managing disaster recovery funds, ensuring that no opportunity for financial assistance is missed. .



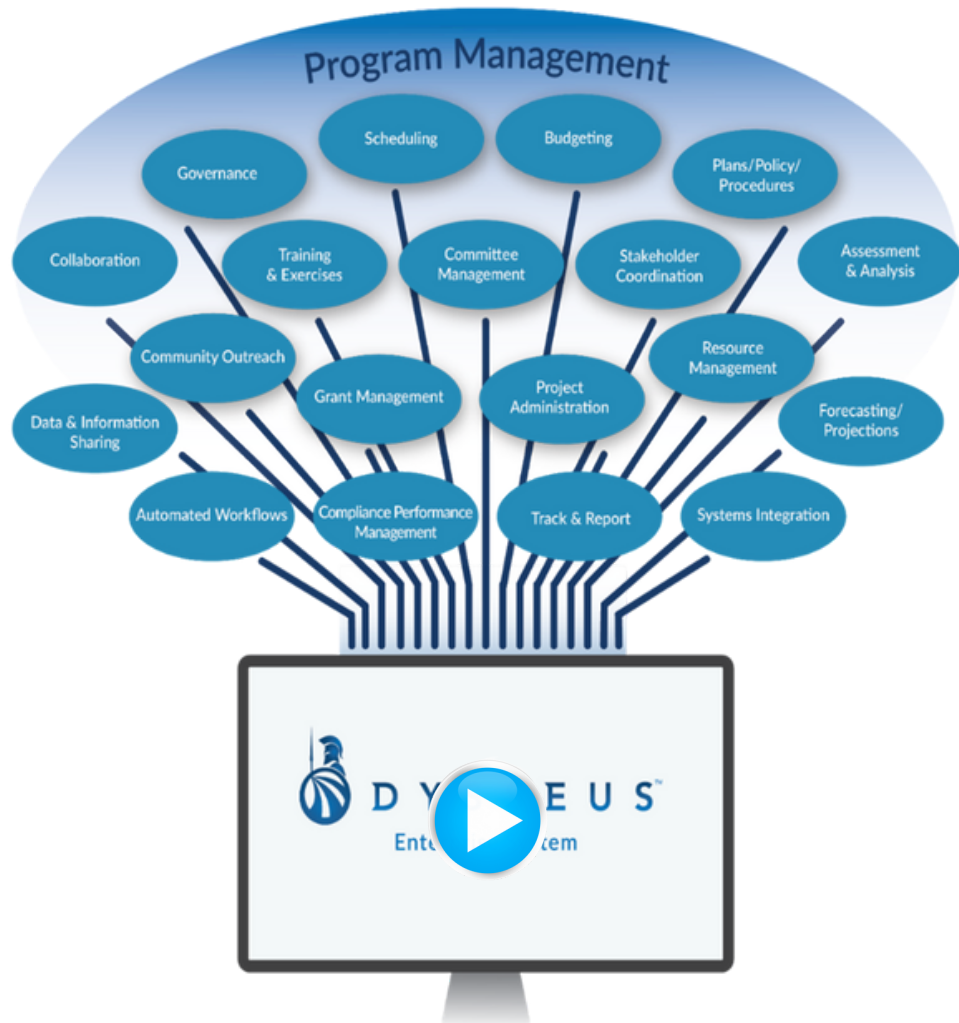
ODYSSEUS™ IN WORK

Disaster Recovery – FEMA Public Assistance Streamlining the FEMA Public Assistance Program

Odysseus Features for FEMA Public Assistance Solutions



- Conduct Field Survey of Damages
- Report FEMA Damage Inventory
- Track Debris Monitoring
- Identify Status of FEMA Projects, Payments & Disbursements
- Assess Hazard Mitigation
- Real Time Tracking of FEMA PA Funds
- Monitor FEMA Compliance & Program Reporting
- Manage & Track Progress of Community Recovery Projects
- Track Eligible DAC and non-DAC Expenditures
- Evaluate Contractor Performance
- Expedite Programmatic Closeout
- Store Supporting Documentation
- Train Staff on FEMA PA Requirements and Drive Accountability
- Compatibility & Integration with Other Financial Management Systems
- Maximize Federal Funding Possibilities
- Identify Recovery Funding Gaps
- Adaptable and Customizable to Meet Your Needs



Disaster History

Disastrous Dates Revisited:

A March to Remember: The Devastating 1925 Tri-State Tornado Outbreak

But the human cost was even more profound. In addition to the 751 souls lost, thousands more were left homeless and injured. Hospitals overflowed with the wounded, and morgues struggled to handle the sheer volume of the deceased. Hundreds of families were forever altered, left to grieve their loved ones while simultaneously grappling with the daunting task of rebuilding their shattered lives and communities. The psychological scars born from such unfathomable trauma would endure long after the physical ruins were cleared and rebuilt.

In recent years, meteorological re-analysis using modern tools and techniques has shed new light on the atmospheric conditions that fueled the outbreak. A potent combination of



factors, including an unstable atmosphere, strong wind shear, and significant temperature and moisture differentials, coalesced to create a "perfect storm" scenario. A powerful low-pressure system moving across the region acted as the trigger, spawning supercell thunderstorms along and near the colliding cold, warm, and dry fronts. These insights, while illuminating, also serve as a sobering reminder of the complex and sometimes unpredictable nature of severe weather events.

The 1925 Tri-State Outbreak proved to be a watershed moment in the history of tornado science and preparedness. In an era before modern tornado forecasting and warning systems, it starkly demonstrated the critical importance of understanding tornadic storm environments and improving the communication of hazards to vulnerable populations. The lessons learned from this tragedy would go on to inform and shape the development of more sophisticated meteorological tools and public safety strategies in the decades that followed.

As we reflect on this somber anniversary, the 1925 Tri-State Tornado Outbreak serves as a poignant reminder of nature's awesome and destructive potential. It also underscores our shared responsibility to build a more resilient and prepared society in the face of an often turbulent and unpredictable atmosphere. By remembering and learning from the disasters of the past, we honor the lives lost and the communities forever changed, while reaffirming our commitment to a safer future for all.