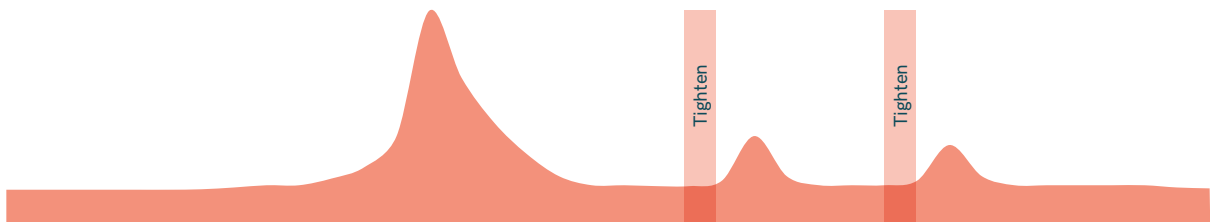
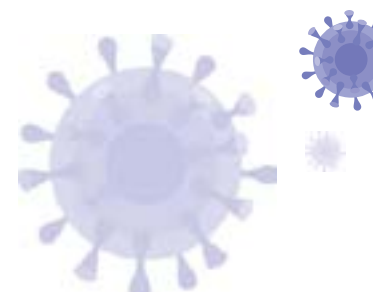


When and How to Close due to COVID-19 Spread



STRICT MITIGATION MEASURES ARE NEEDED WHEN ONE OR MORE CRITERIA IN AT LEAST 2 OF 3 COLUMNS ARE MET:

Epidemiology	Health Care	Public Health
<ul style="list-style-type: none"> ✓ Increasing new case counts of at least 10% for 3 consecutive days in the context of no substantial increase in testing ✓ Doubling time of cases less than 5 days (from most recent nadir) ✓ More than 3 unlinked chains of transmission in a 14-day period ✓ High likelihood of exposure at mass gathering or congregation of people or delayed detection of a case (>5 days) from a mass gathering or long-term care facility) ✓ Steady increase in ILI in syndromic surveillance for at least 10 days above seasonal average ✓ Increasing number of new health care worker infections for 5 consecutive days 	<ul style="list-style-type: none"> ✓ Inability to scale up to 2x the number of ICU patients from current census (including staffing) ✓ Can no longer screen large numbers of symptomatic patients safely (e.g., outdoor tents, drive through) (including staffing) ✓ Less than 4 weeks supply of PPE for double the current case load ✓ Insufficient face masks to provide to all patients seeking care even if cases double ✓ More admissions than discharges for COVID-19 over 3 consecutive days ✓ Do not have baseline capacity in general health services, including through expansion of telemedicine for Covid-19 and usual care ✓ Health care facilities can no longer be structured to reduce possibility of exposure at triage and all other locations 	<ul style="list-style-type: none"> ✓ Cannot elicit contacts for 20% or more of cases ✓ 10% or more of symptomatic contacts fail to get tested or get tested in more than 24 hours of symptom onset. ✓ Insufficient hand sanitizer to place at entry of buildings including workplaces ✓ No designated facilities for non-hospitalized COVID-19 infected people who can't be safely cared for at home (e.g., because of space constraints, medically vulnerable household members, or otherwise) ✓ No longer have the ability to convey physical distancing recommendations which change behavior in residents



ONCE THE CLOSURE CRITERIA ARE MET, THE FOLLOWING ACTIONS SHOULD BE TIGHTENED OVER TIME:

Action	Tighten immediately (if not already on)	Maximum tightening
Wash hands often	Already on	Continue
Cover coughs	Already on	Yes
Don't go out if ill	Already on	Yes
Face mask if ill go out	Already on	Yes
Face mask for all in community	No	Consider
Surface and object cleaning	Already on	Yes
Increase ventilation	Already on	Yes
Quarantine of contacts of cases	Already on	Yes
Physical distancing to 6 feet when possible – avoid crowding	Turn on	Yes
Stop visits to nursing homes, hospitals, congregate facilities	Already on	Yes
Ban all gatherings including religious (above 10, 50 people)	Yes for 50 or more*	Yes, all non-household
Restaurant closures	Open – only delivery/to go	Open - only delivery/ to go
Bar closures	Open – only delivery/to go	Turn on
Special situation business closures**	Partial closure*	Yes, all
General business closures (non-essential)	Turn on	Yes
University closures	Yes (online encouraged)	Yes (online encouraged)
K-12 closures	Yes (online encouraged)	Yes (online encouraged)
Day care closures	Yes	Yes
Quarantine of travelers from high-prevalence areas	Yes, voluntary	Yes, mandatory

*People over age 60 and those who are medically vulnerable, including employees, continue to shelter in place, including employees.

**Special business situations include strategically important entities (e.g., infrastructure), entities which can reopen while ensuring safe commute, physical distancing, exclusion of anyone ill, and mandatory handwashing/sanitizing at entry and periodically during day.

Note: Decisions should be made based on evolving knowledge (e.g., infectivity of children), availability of treatment, community burden, acceptance and adherence, and other factors.